

1445 OHIO STREET

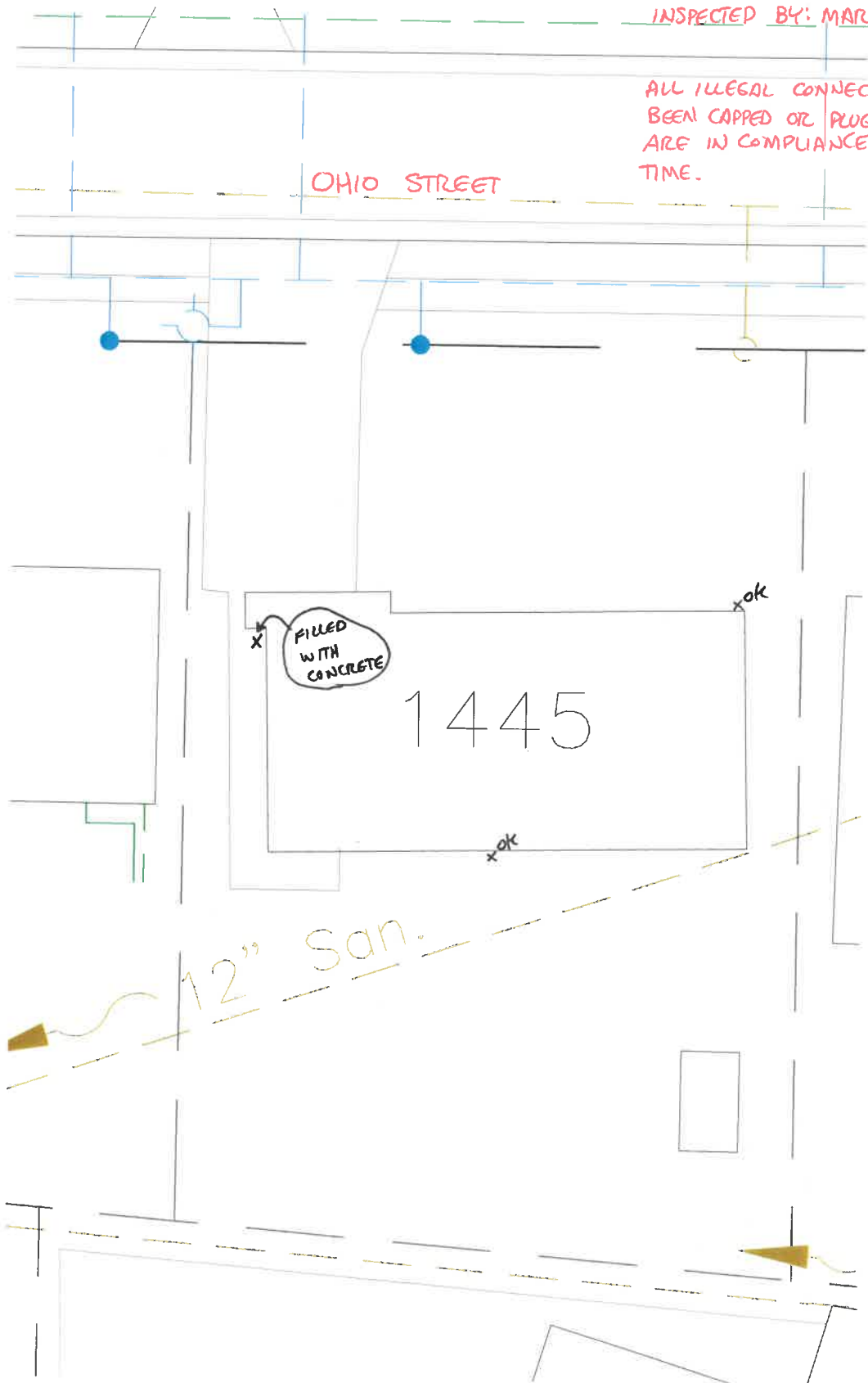
2016



INSPECTED BY: MARK SPIESS

ALL ILLEGAL CONNECTIONS HAVE BEEN CAPPED OR PLUGGED AND ARE IN COMPLIANCE AT THIS TIME.

OHIO STREET



FILLED WITH CONCRETE

1445

12" San.

xok

xok